

About The Event

This conference is presented in partnership with the Massachusetts Alzheimer's Disease Research Center at Mass General Brigham and the Dementia Care Collaborative.

Applications have been made for Continuing Education Credits for RNs, APRN's, LPNs, Social Workers, Activity Professionals, Nursing Home Administrators, Dietitians, and Pastoral Care Professionals.

Memory Care Services at St. Patrick's Manor

The success and longevity of our specialty care services, focusing on memory care, are complemented and deeply rooted in compassionate care. St. Patrick's Manor is part of the Carmelite System, an organization of senior living and care homes sponsored by The Carmelite Sisters. Carmelite System Communities offer the highest quality of care paired with faith-based, mission-driven roots.

Our interdisciplinary team, led by Specialty Care Director, Claire Henry, M.Ed., Ph.D. (ABD), CDP, works with each resident's family to develop an individualized plan for their loved one. All members of our team receive specialized training in working with individuals with memory loss, including from the Avila Institute of Gerontology, the Educational Arm of the Carmelite Sisters for the Aged and Infirm, so they can be creative and adapt services to a resident's life history, abilities and needs.



St. Patrick's Manor
863 Central Street
Framingham, MA 01701



ADDRESS SERVICE REQUESTED



ST. PATRICK'S MANOR
NURSING & ROSARIE CENTER
FOR SHORT-TERM REHABILITATION



COMPASSION AMID THE CONFUSION

**Alzheimer's Disease Conference
For Professional Caregivers**

WEDNESDAY, OCTOBER 22, 2025
TIME: 8AM - 4PM

863 Central Street | Framingham, MA 01701

KEYNOTE SPEAKER



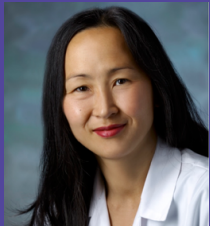
Christine Ritchie MD.

Christine is Director of the Dementia Care Collaborative, Co-Director of the Massachusetts Alzheimer's Disease Research Center (MADRC), Outreach, Recruitment, and Engagement (ORE) Core, Director of Research, Division of Palliative Care, and Geriatric Medicine, Director, of

Mogan Institute Center for Aging and Serious Illness, Massachusetts General Hospital.

Dr. Ritchie is a board-certified geriatrician and palliative care physician and conducts research focused on optimizing quality of life for those with chronic serious illness and multimorbidity.

FACULTY



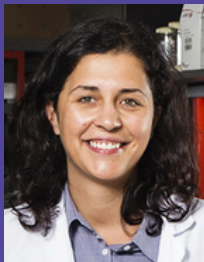
Jin Joo MD.

Associate Professor in the Harvard School of Medicine, Department of Psychiatry, Division of Geriatric Psychiatry and Neuropsychiatry.



Catherine Munro, PHD - Neuropsychologist

Instructor of Neurology at Harvard Medical School. Neuropsychological assessment services provider to patients at the Brigham and Women's Center for Brain/Mind Medicine.



Selene Lomoio, Ph.D.

Research Assistant Professor, Department of Neuroscience, Tufts University School of Medicine.

About The Event

Compassion Amid the Confusion is a principal conference geared toward persons with early dementia, families, friends, and professionals. The conference is a collaboration among medical personnel and caregivers.

This collaboration has worked to create a day designed to inform, educate and support persons with dementia – and their families. Since 1987, leading presenters have come together at St. Patrick's Manor to ensure the most innovative conference in dementia care for over one-hundred participants, sponsors and exhibitors.

PANEL PRESENTATION



Maritza Ciliberto



Heily Chavez Granados, BA.



Christine M. Brown, BS, MD.

Dementia Care Collaborative after Massachusetts Alzheimer's Disease Research Center

How To Register

Reserve your Spot By **October 10, 2025**

For more information call

Claire Henry at 508-370-8523 or email chenry@stpatricksmanor.org

Online Registration and Payment

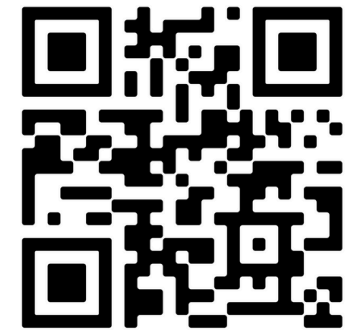
Available at:

www.StPatricksManor.org/Compassion

or

Scan the QR code below for more details.

The \$150 Program Fee includes 6.0 Professional Continuing Educational Credits, certificate, lunch and parking.



SCAN ME